

## Argyle Cooperative Warehouse Assn. – Argyle, MN (1905-2009)

At a meeting on June 20, 1905, a new corporation named the Farmers & Merchants Elevator Company, Argyle, MN was formed. The Duluth Elevator Company's Argyle facility was purchased a few months later for \$6,000 & became the company's first home. This facility initially handled grain, coal & feeds, and for a short time they also had a potato business.

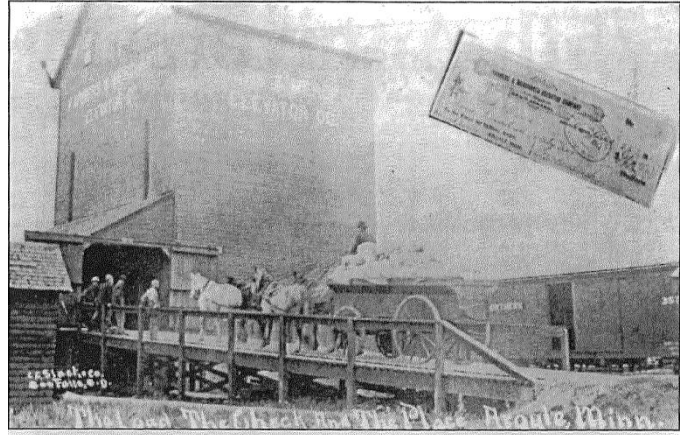
In 1935, the company changed from a stock company to a cooperative. On November 30, 1937, the name Argyle Cooperative Warehouse Association was unanimously adopted by the stockholders.

A new elevator was built in Argyle in 1949. A bulk dry fertilizer facility was leased on a year to year basis starting in 1968, which has now become quite a large portion of the Co-op's business. The agronomy department was started in 1992.



death in 1992.

Mark Dufault has been the manager of the Argyle Cooperative Warehouse Association since 1998 & is only the 8<sup>th</sup> manager in the co-op's history.



Farmers and Merchants Elevator Company, which would become Argyle Cooperative Warehouse Association, receiving a load of Timothy seed in 1911.

Of particular note, 2 individuals from this location have significant ties to the Minnesota Grain and Feed Association, formerly known as the Farmers Elevator Association of Minnesota. H.R. Meisch, who served as the first Vice President of the Farmers & Merchants Elevator Company of Argyle, also served the Farmers Elevator Association of Minnesota as Association President from 1913 until 1921. Medard Yutrzenka, who was also a longtime director & officer on the board for the Argyle Cooperative Warehouse Assn., served as the President of the Farmers Elevator Association of Minnesota for 17 years, a position he held until his